

Type: FERRETTI 76



Builder	FERRETTI	Loa	(m) - 23,5 (f) - 77,1
Year	2002	Beam	(m) - 6,0 (f) - 19,7
Flag	Greek	Draft	(m) - 1,8 (f) - 5,9
Accommodation	8 Guests in 4 CABINS + 4 CREW	Hull	GRP
Lying	ATHENS,GREECE	Engines	2 x 1420 HP CATERPILAR

Asking Price: Euros 1.100.000 Vat not Paid

ACCOMMODATION	
Crew cabin	Crew quarters for 4 persons in 2 twin cabins with en-suite facilities
Guest cabin	2 x twin bedded guest cabins with en-suite facilities
Master cabin	Full beam master double bedded stateroom with en-suite facilities and walking closet
Vip cabin	Vip guest cabin with double bed with en-suite facilities
DECK EQUIPMENT	
Anchor	2 x Anchors (1 x 80 kg) & (1 x 50Kg)
GALLEY EQUIPMENT	
	Full sets of cutlery, crockery and glasses, Fully fitted galley
Dishwasher	1 x Bosch dishwasher
CONSTRUCTION	
Hull	GRP
Superstructure	GRP
LAUNDRY EQUIPMENT	
Dryer	1 X Bosch drier
Washing Machine	1 X Bosch washer
MACHINERY	
Air Conditioning	Condaria 72.000 BTU reverse cycle throughout
Engines	2 x 1420 HP Caterpillar, Diesel
Engine Hours	2900 on 1/2018
Shafts	Drive type Shafts
Steering system	Hydraulic
MAIN CHARACTERISTICS	
Beam	5.95 M (19'6")
Builder	Ferretti
Cruising range	450 Nm (Approx)
Cruising speed	28 Knots
Economic cruising speed	25 knots with consumption of 340l/hour
Designer	Zuccon International
Displacement	54 Tons
Draft	1.83 M (6'0")
Fuel capacity	5.900 Litres
L.O.A.	23,45 M (76'11")
L.W.L.	19.92 M (65'4")
Max. speed	32 Knots
Type	Fly bridge Motor yacht
Water capacity	1.000 Litres
Year	2002
EQUIPMENT	
	Shipmate RS 8400 with DSC, Raytheon tridata speed/depth/log, Repeaters on the fly bridge console
Autopilot	Raytheon ST 7001
GPS-Plotter	Navionics chartplotter

Radar	Furuno radar, 64 mile range
icemaker	isotherm
Water maker	Idromar 150l/hour
Pasarella	Besenzoni hydraulic telescopic
Crane on Fly	Besenzoni
Generators	2 x kohler 19 KVA each 7000 & 8500 Hrs
3rd control station	Aft deck
Gear Box	ZF
TENDERS & TOYS	
	Kneeboard, Doughnut, Banana, Snorkelling gear
Jet Ski	Sea doo RX 255
Tender	4 M Novurania with 50 HP outboard,
Water ski	Waterskiing equipment
COMMUNICATION EQUIPMENT	
	Satellite communications
VHF	3 X -icom handheld VHF's
WIFI	4g throughout the yacht
ENTERTAINMENT EQUIPMENT	
DVD	DVD player in main salon and master/vip cabin
STEREO SYSTEM	Stereo hi fi with Bose surround in main salon and aft deck
TV	40" Samsung LCD in main salon with KHV4 antenna
VIDEO	Video player in main salon

Disclaimer

The Company offers the details of this vessel in good faith but cannot guarantee or warrant the accuracy of this information nor warrant the condition of the vessel. A buyer should instruct his agents, or his surveyors, to investigate such details as the buyer desires validated. This vessel is offered subject to prior sale, price change, or withdrawal without notice.



























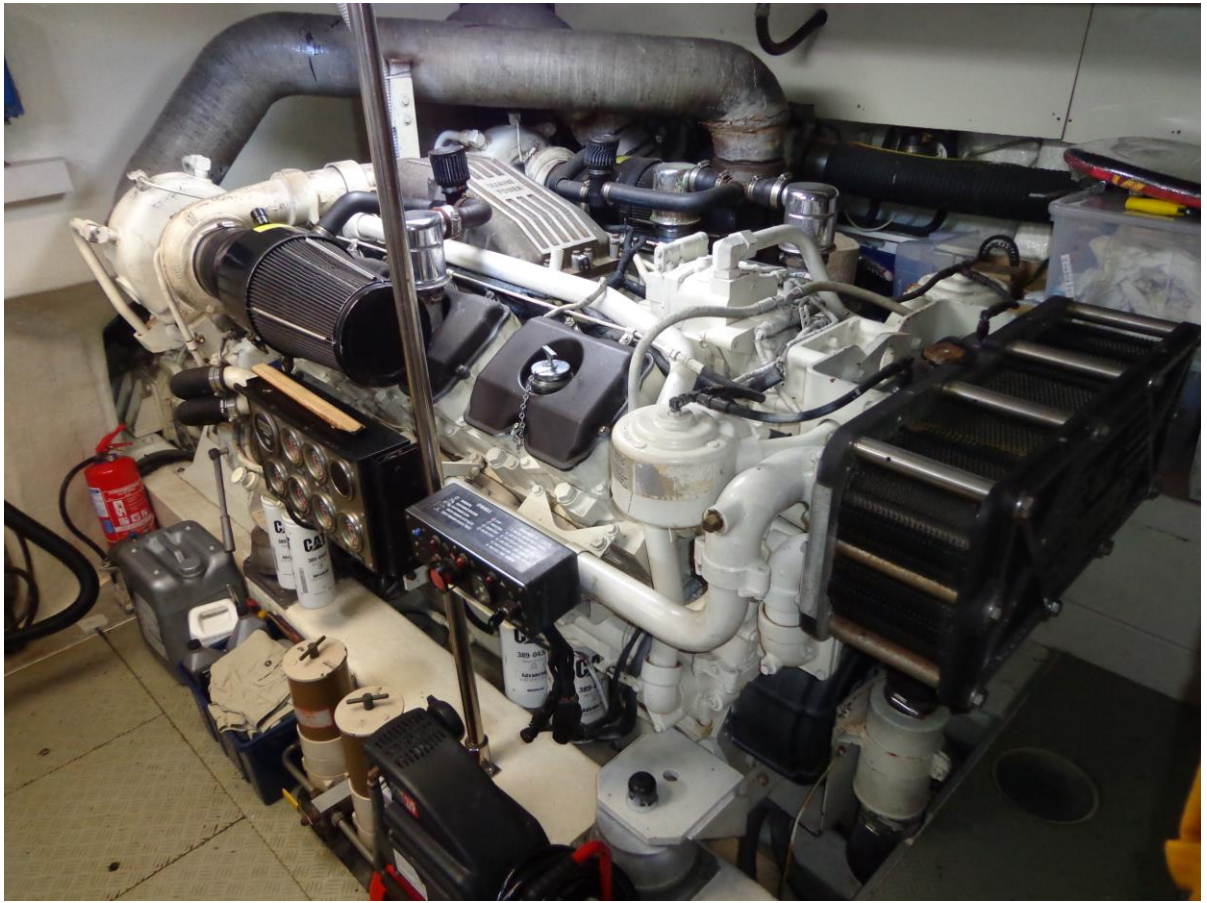


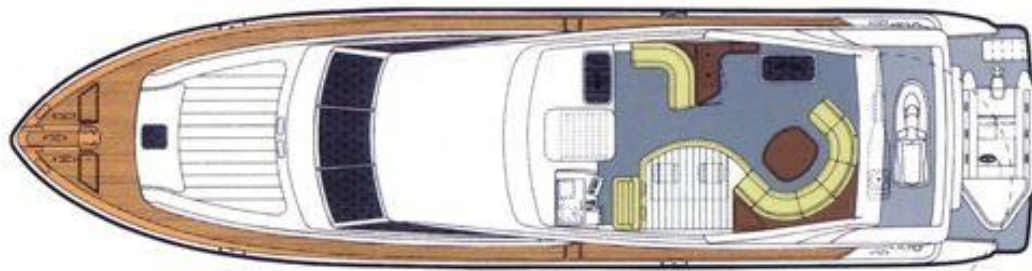












■ Guest Bathrooms ■ Guest Cabins

