

PARSIFAL  
YACHTING

yachtbrokerage

Azimut 103S





## Specifications

Builder: Azimut Yachts

Type: Azimut Grande 103 SL

Model Year: 2012

L.O.A: 30.91m / 103'

Beam: 7.57m / 24.10'

Draft: 1.35m / 4.5'

Displacement: 105 ton

Interior Design: Carlo Galeazzi

Exterior Design: Stefano Righini

Classification: RINA 100 A 1.1 "Y"

Material: GRP

Cabins: 4 + 2 for crew

Main Engines: 2 x 2.400 bhp MTU 16V 2000 M93

Max Speed: 34 knots

Cruising Speed: 30 knots

Max Speed: 31 knots

Fuel Tank: 12.350lt

Fresh Water Tank: 2.500lt

Flag: Turkish

Location: Gocek , Turkey

Asking Price: 2.950.000€



## Machinery

Engines: 2 x 2.400 bhp MTU 16V 2000 M93  
Engine Hours: 1380 hrs (March 2022)

KAMEWA by Rolls Royce Water Jet System

Generators: 2 x 50Kw Kohler power generators  
Cruisair air condition system (Tropical)  
SAE converter with seamless transfer  
Double Racor filters for the engines  
Watermaker Idromar 180 lt/h

## Communications & Navigation equipment

Raymarine G series package with 62 HD radar antenna and Simrad autopilot  
FLIR night vision camera  
CCTV in engines room  
Raymarine TV SAT Antenna  
HD SAT decoders  
Anchor Windlass Lofrans



## Accommodation

Number of Guests: 8

Number of Cabins: 4

One Master cabin with en-suite facilities

One VIP cabin with en-suite facilities

Two Twin cabins each with en-suite facilities

Crew Cabins: 2

## Galley Equipment

MIELE coffee machine

Trash compactor

MIELE G 1180 SCVI dishwasher

MIELE KM 5673 cooking top

MIELE H4900B oven

Kitchen AID KMBS1454RSS microwave

ELIBLOC 9 hood

SUBZERO 642/S fridge



## Deck Facilities

Bimini Top on fly and bow sunbathing area  
Sun awning on aft maindeck sunbathing area

Teak on bathing platform, cockpit, side decks and flybridge

Install launching and recovering system for tender and two jet skis

## Other Equipment

Humphree fin stabilization system

Humphree intruders with upgraded configuration ATOS

Alarms repeater in crew quarters

Hull painted in Azur blue

Bar cabinet on cockpit

Wine cooler in starboard salon side

OCEANLED underwater lights

Bowthruster

## Tenders

1 x dinghy (length 3.80m) Yamaha 40hp



## Disclaimer

The Company offers the details of this vessel in good faith but cannot guarantee or warrant the accuracy of this information nor warrant the condition of the vessel. A buyer should instruct his agents, or his surveyors, to investigate such details as the buyer desires validated. This vessel is offered subject to prior sale, price change or withdrawal without notice.





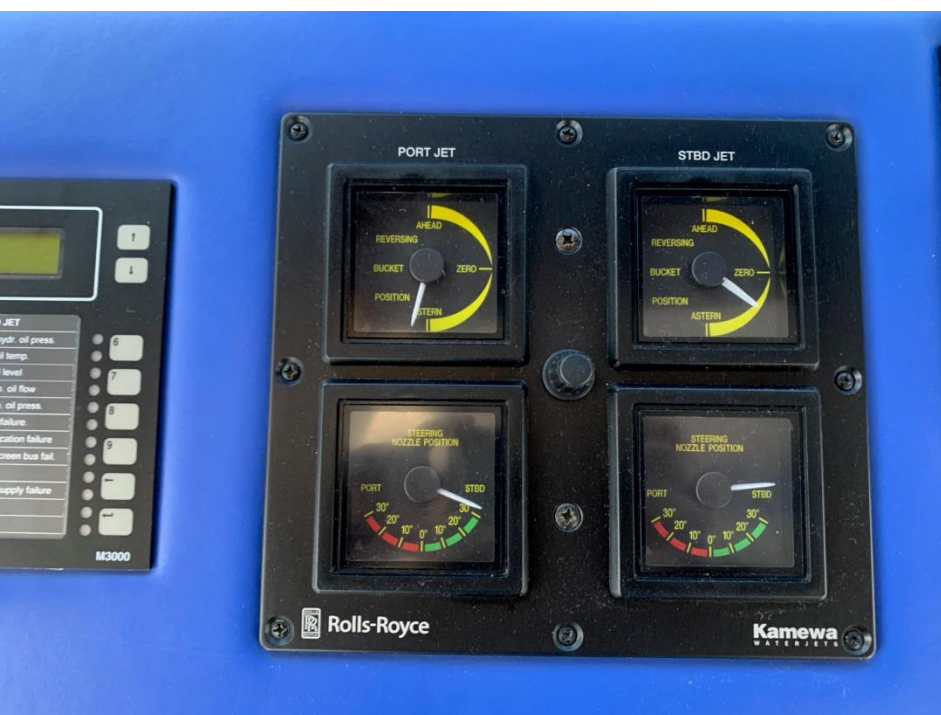






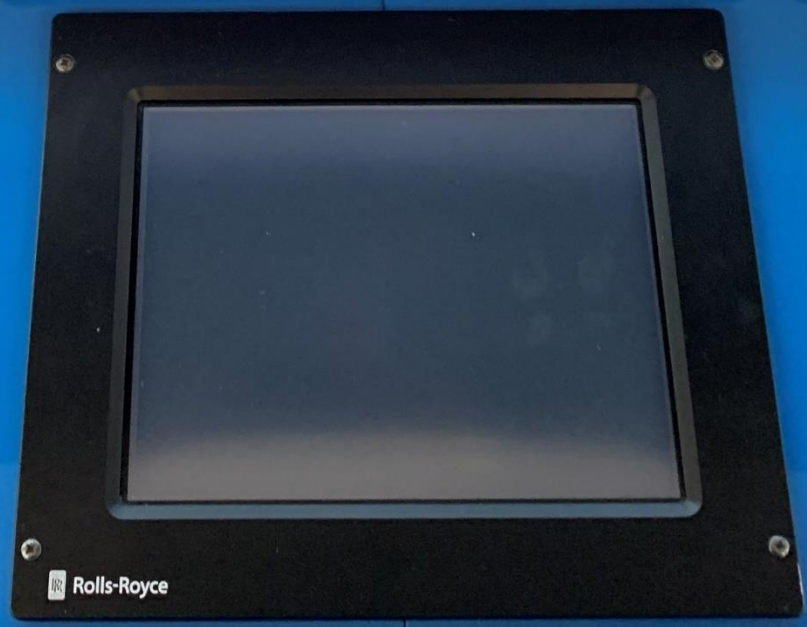














# MASTERCABIN













VIPCABIN



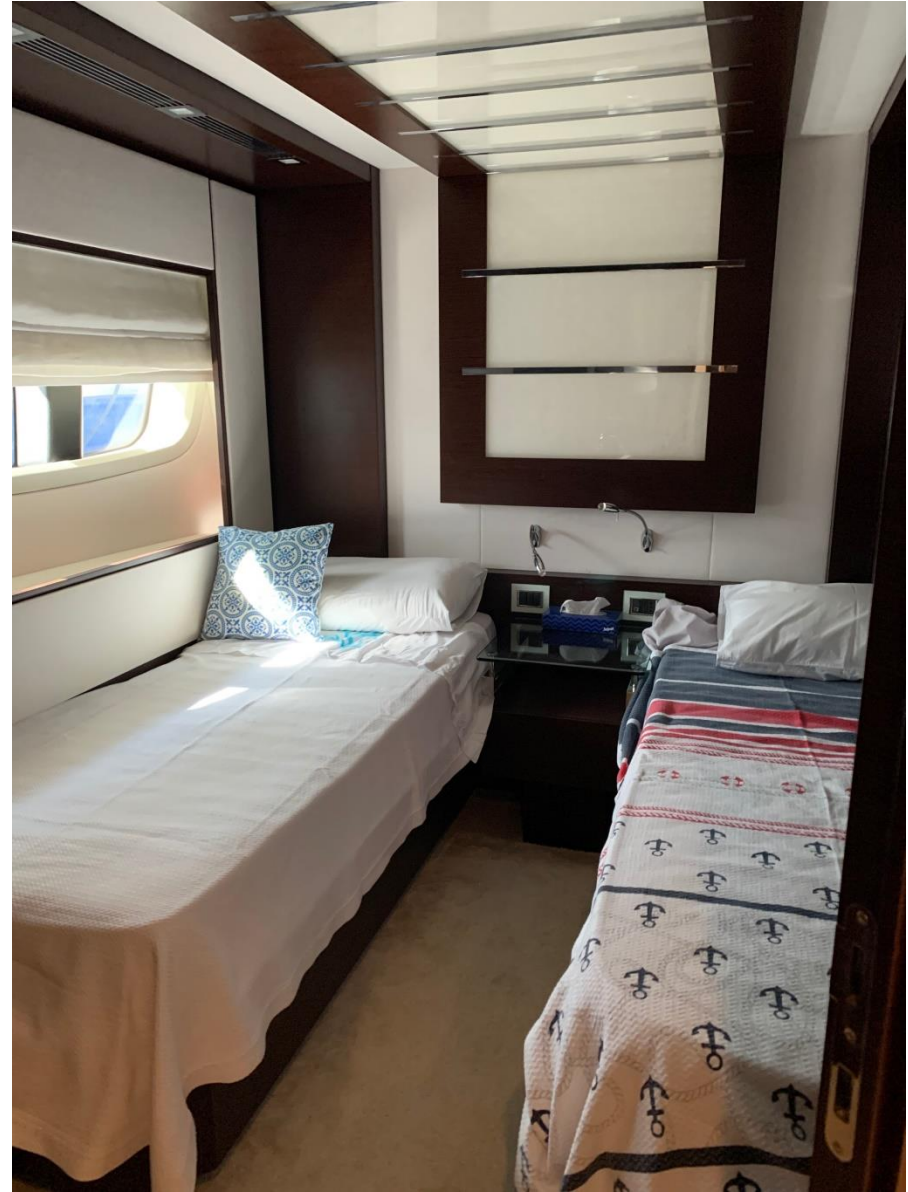


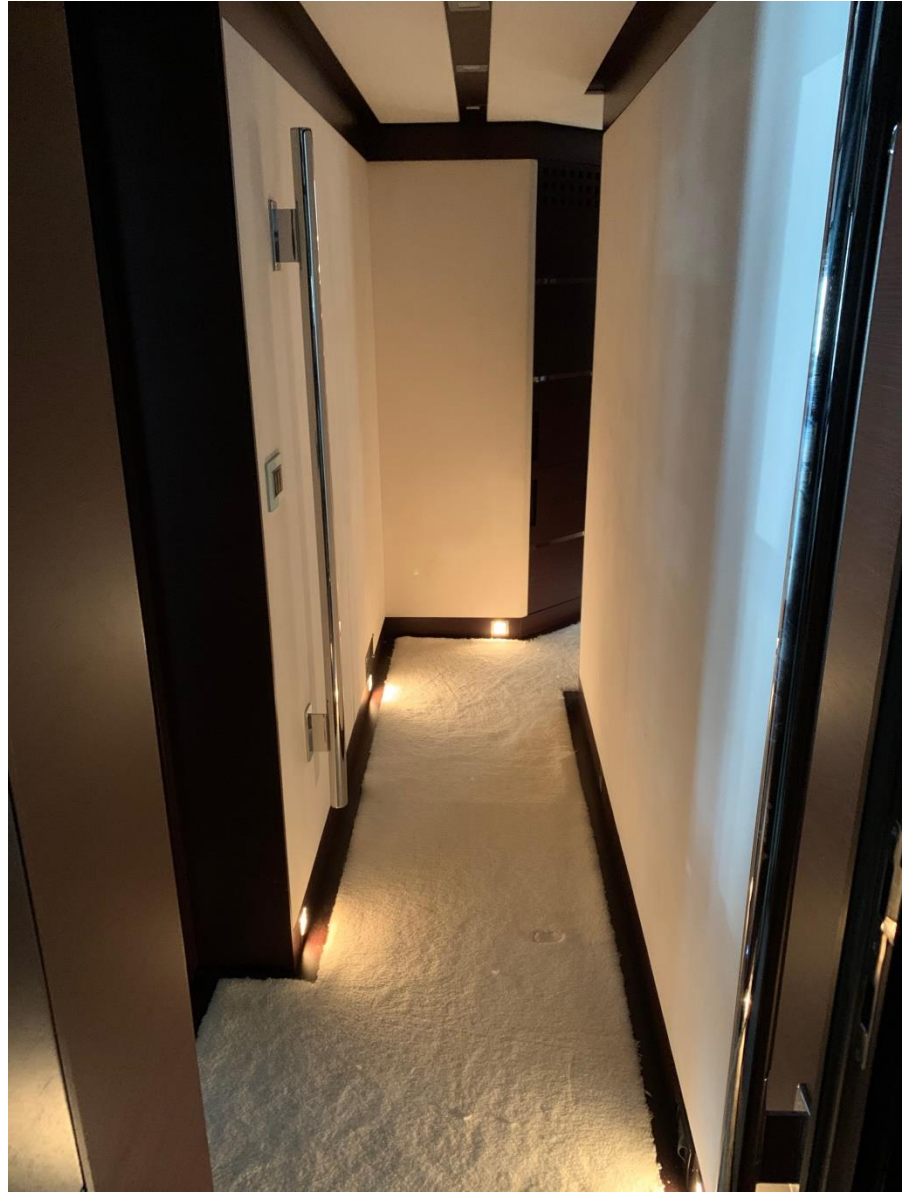


# DOUBLECABIN



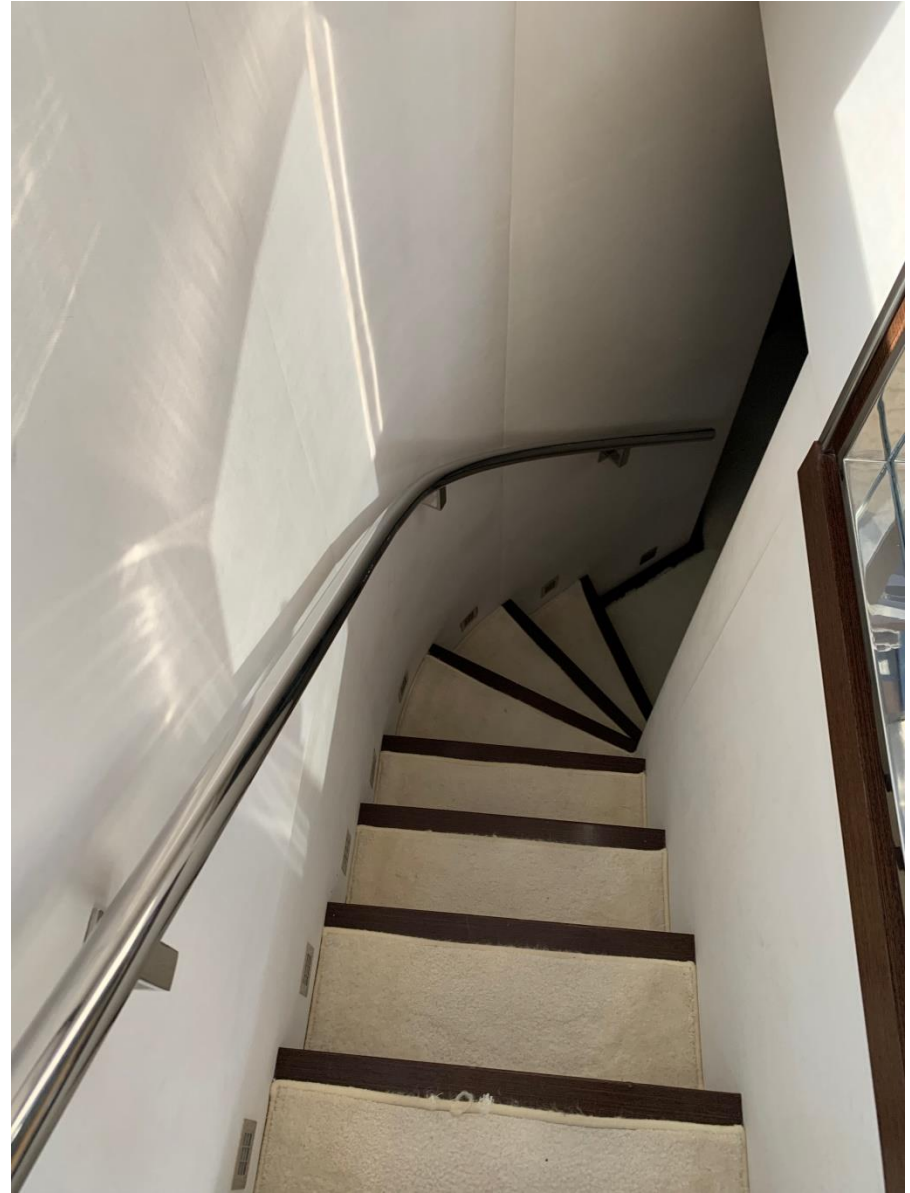
# TWINCABIN























Raymarine

Raymarine

GOLDFINGER



















AZIMUT  
Grande

WATERLINE  
REG. NO. 10000000









MEMBRANE IN

MARCHA RUNNING

ARRESTO STOP

RESET

SALINOMETRO SALINOMETER

C901

SCALIBRABLE 0-20 40 60 80 100 200 %

fivoleco

CAUTION

Zalameda INTERNATIONAL MODEL MCL3





