

PARSIFAL
YACHTING



Cantieri Di Pisa – Akhir 110



Specifications

Builder: Cantieri di Pisa

Model: Akhir 110

Year: 1999

Refit: 2021 - 2022

L.O.A.: 34m (110ft)

Beam: 7.45m (24.5ft)

Draft: 1,8m (5.11 ft)

Hull: GRP

Superstructure: GRP

Gross Tonnage: 214tn

Cruising Speed: 15 knots

Max Speed: 22 knots

Fuel tank capacity 23000 L- Water Tank capacity 3000L

Range of nautical miles is 650 at a speed of 24 knots

Water Capacity: 3,500 L

Engines: 2 x MTU 12V 396 TE94 KW (CV) each 1704 (2285) (Diesel)

Accommodation: 8 guests in 4 cabins

Turnkey condition

Flag: Malta

Asking Price: € 2.500.000 VAT Paid



Machinery

Engine: Make

Model: 12V396TE94

Year: 1999

Engines hours: 3535hr and 3562hr

Drive type: shaft & propeller

1680@ 2000rpm

Generator: 2 x Northern Lights

Generators hours: 4486 and 7420

Watermaker idromar 364hr (New)

Electronics

Toilet system Jet

Fresh water system 2 Gianneschi pumps(220v-24v) and hidromar filters and UV SH5000.

Fuel and oil transfer Gianneschi

Emergency PTO Gianneschi 24v

Emergency FF pump Gianneschi (diesel)

FF and built pumps Gianneschi 7.5kwll

Stabilizer VOSPER

Stern and Bow thruster: Hydraulic Stern trust

Gangway or Hydraulic

gangway,Crain,swimming ladder:

MOTOMAR



Accommodation

Accommodates 8 guests

1 Master Cabin

1 VIP cabin

2 Twin Cabins

Plus 5 Crew in 3 crew cabins

Bathrooms 4+3+1

Galley Equipment

Dishwasher: Bosh silence + series II

Washing machine: Miele sorf tronic3224 +
dryer 8722

Oven – Microwave: Samsung ME82V

Fridge: Samsung digital RR35H6100WW(2) +
LIEBHERR PROFILINE

Deep Freezer: ZOPPAS + SAMSUNG



Navigation

Depthsounder: Raymarine

Log speedometer: Raymarine

Navigation Center: Raymarine axiom XL22 (2 bridge, Raymarine axiom XL18.5 (2 fly bridge)

Auto pilot: Raymarine

Compass: Ritchie

GPS: Raymarine and Furuno

VHF: Raymarine A80289

Radar: Raymarine

Cockpit cushion CAntieri di Pisa

Entertainment Equipment

TV/ DVD/CD: LG 32" (1) and Samsung 55" (3)

Tenders

Tender: 20hp yamaha Nautica Pennati

Liferaft: zodiac xdc 7cp82 b999

Air – Conditioning / Heating

Air conditioning: Domestic PCWM 60004

Heating

Hot water: 2 x boiler



2021 /2022 Technical & Interior Refit

New Carpet and all interiors renewed

New Upholstery

New Audio Video interior and exterior (professional system for the exterior)

New Electrical System

New Electronics Latest Raymarine Professional Model

Radar Antenna

Engines and Generators serviced

Engines 3.000 hrs

Generators 4000 and 7000 hrs

New tender 25 hp

In Class Lloyd's renewed in March 2021

Great Painting job hull and superstructure

And Many More Upgrades

Disclaimer

The Company offers the details of this vessel in good faith but cannot guarantee or warrant the accuracy of this information nor warrant the condition of the vessel. A buyer should instruct his agents, or his surveyors, to investigate such details as the buyer desires validated. This vessel is offered subject to prior sale, price change, or withdrawal without notice.



MAIN SALON and DINNER ROOM















OWNER CABIN













VIP CABIN















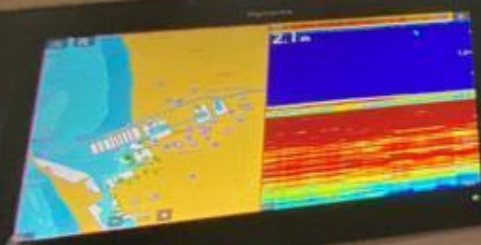
TWIN CABINS





BRIDGE





156°

2.1



M/Y SPIR
VALETTA
MARELLI SPA
SAL. 300.000.000
S.A. 0755
00108 TORREDEZZA MI





GALLEY







FLY BRIDGE







ENGINE ROOM and GARAGE







