

PARSIFAL  
YACHTING



Sunseeker 80' 2011

---



## Specifications

Builder: Sunseeker

Type: Sunseeker 80

Year: 2011

Refit: 2017

L.O.A: 24,44m / 80.30'

Beam: 6,09m

Min Draft: 1,8m

Max Draft: 1,96m

Hull Material: GRP

Cruising Speed: 28 knots

Max Speed: 32 knots

Range at Cruising Speed: 350nm

Range at Max Speed: 300nm

Fuel Capacity: 6500 l

Engines: 2 x 1550hp MAN D2842 L433 (12V-1550)

Water capacity: 1500 l

Dry Weight: 61.870kg

Stabilizers (trac)

Accommodation: 8 guests in 4 cabins

Location: Greece

**Asking Price: € 2.100.000**



## Engines

Engines: 2 x MAN D2842 L433 (12V-1550)

Type: Inboard

Power: 1550hp Each

Fuel Type: Diesel

Engine hours: 2.174 hrs (September 2024)

## Generators

2 Kohler generators

1 whisper night generator

Generator hours: 3553hrs (September 2024)



## Accommodation

- 1 full beam master cabin with ensuite facilities
- 1 full beam VIP cabin with ensuite facilities
- 2 twin cabins with ensuite facilities
- 1 crew cabin for 2 crew



## Galley & laundry equipment

Separate washing machine and tumble dryer in the port crew cabin Enclosed galley option

Miele

Miele microwave 800w

Miele fan oven

Bosch fridge-freezer with ice maker

## Navigation equipment

Raymarine E120W – 12.1" widescreen additional color repeater on flybridge

Autopilot repeater

Depth and speed multi display

Remote spotlight control Trim tab control

Horn control • Digital bar chart display for fuel monitoring system

Radar/chartplotter with GPS repeater VHF second station

Manual compass

Steering indicator

IMCO navigation lights



## Entertainment equipment

- Bose upgrade for flybridge – 4 Marine speakers powered by 2 Bose SA2 amplifiers allowing for zone control of the saloon Bose system with the Bose PMCII
- DVD - Bose Lifestyle 48 DVD/CD surround system in lieu of standard surround system for the saloon
- Bose upgrade for aft cockpit – 4 marine speakers powered by 2 Bose SA2 amplifiers
- Saloon TV upgraded to 46" Samsung display
- DVD - Bose 321 series II CD/DVD Cinema Surround sound system linked to TV in lieu of standard DVD
- Bose upgrade for foredeck - 2 Infinity Kappa Marine 9" x 6" speakers powered with 1 Bose SA3 amplifier allowing for zone control of the saloon Bose system with the Bose PMCII remote



## Deck Equipment

- Underwater lights – Aqualuma Series 6 white LED wide angle (3 across transom, 1 aft each side)
- U-line wine cooler in saloon
- Teak table on fore deck
- Acrylic deflecting spray screen
- Teak dining tables (natural finish) on flybridge
- Wet bar unit with sink, icemaker, fridge and Kenyon electric BBQ on flybridge
- Low - level flybridge lighting 24v Deckwash outlet
- Seating areas on flybridge
- All fittings in 316 stainless steel and chromed bronze
- Stainless steel pulpit and cockpit rails
- Stainless steel bow roller with anchor stop and devil's claw
- Chain locker
- Pantograph windscreen wipers and washers
- Fresh water filler
- Fuel fillers at port and starboard sides
- Aft cockpit camper cover with windows
- Hot and cold hand-held swimming shower on bathing platform
- Hydraulic telescopic gangway on bathing platform
- Television, telephone and fresh water marina connection on bathing platform
- Radar arch structure and radar chair with navigation light assembly with overhead lighting on underside of radar arch 24v Flybridge cockpit teak decking



## Deck Equipment

- Self – draining cockpit
- Storage lockers under seating
- Stainless steel aft safety rails
- Flagstaff and socket
- Companionway hatch at top of stairs from aft cockpit to flybridge deck
- Upholstered sunbathing area forward
- Two seats at flybridge helm
- Pair of stainless steel bow cleats and fairleads
- Pair of stern cleats and fairleads Stainless steel spring cleats with chafing bars
- Stainless fendering with rubber insert Stainless steel bow plate
- Curved direct glazed safety glass windscreen
- Remote controlled spotlight at bow Skylight from VIP stateroom
- Windscreen sunscreen
- Flybridge instrument cover
- Teak table (natural finish) wetbar and coolbox in aft cockpit
- Platform
- Foldout stainless steel swimming ladder on bathing platform
- Hydraulic bathing platform itself is laid with teak
- Dockside AC connection 1 x 100 amp
- Glendinning Cablemaster 8. Safety & security equipment
- CCTV with 3 cameras: 2 infrared cameras located in the engine room plus 1 camera located on the flybridge overhang facing
- aft - image is to be displayed on the navscreens at the helm
- Safe with digital lock





## Description

This Sunseeker 80 is in immaculate condition and ready for immediate use. Accommodating up to 8 guests in 4 luxurious cabins, each with en-suite facilities, the yacht offers the ultimate in comfort and privacy. Fully equipped and maintained to the highest standards, she is presented in turn-key condition, perfect for those seeking a yacht that is ready to cruise.





















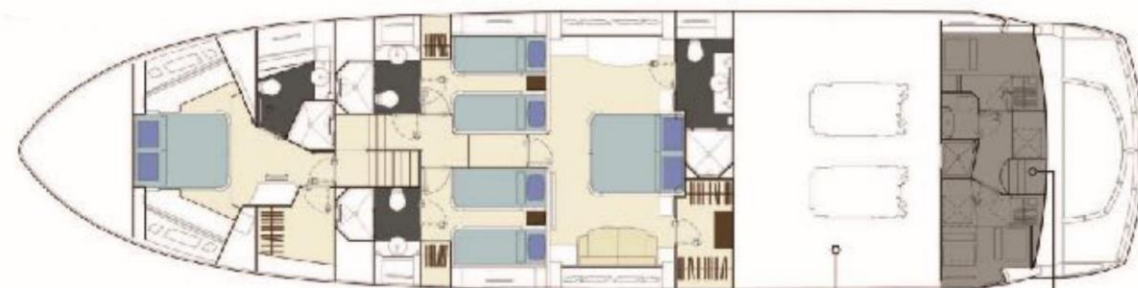
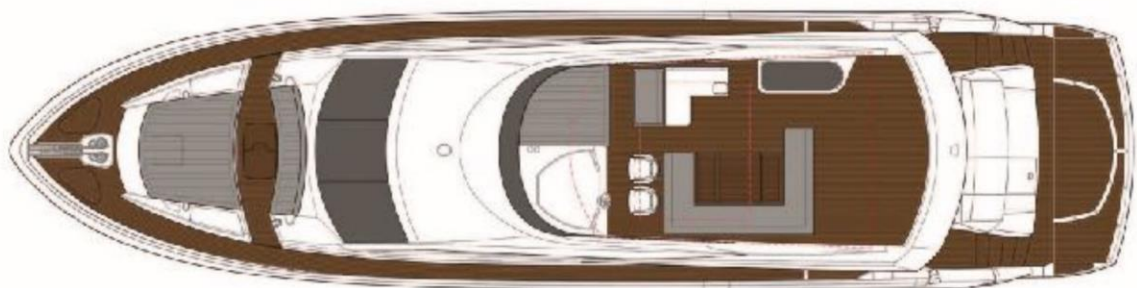












Machinery and engine room

Separate crew area with separate entrance



An aerial photograph of a beach. The top half of the image shows the white sand of the beach, with gentle waves washing onto the shore. The bottom half shows the turquoise water of the ocean, with small waves and ripples. A semi-transparent white rectangular box is centered over the image, containing text.

## Disclaimer

The Company offers the details of this vessel in good faith but cannot guarantee or warrant the accuracy of this information nor warrant the condition of the vessel. A buyer should instruct his agents, or his surveyors, to investigate such details as the buyer desires validated. This vessel is offered subject to prior sale, price change, or withdrawal without notice.