

Tecnomar 100

PARSIFAL
YACHTING





Specifications

Builder: Tecnomar

Type: Tecnomar 100

L.O.A: 30.50m / 100ft

Beam: 7.50m

Draft: 3.45m

GT: 142

Hull: GRP & Superstructure

Year Built: 2009

Refit: 2022 Majorly Upgraded throughout, as well as freshly painted hull

Registration: Commercial

Condition: Excellent

Cruising Speed: 23 knots

Max Speed: 28 knots

Water Capacity: 3.000 Lt

Fuel Capacity: 10.000 Lt

Holding Tank : 8.500 Lt

Accommodation: 10 - 12 guests in 5 cabins plus 5 crew

Flag: Greek

Location: Athens - Greece

Asking Price: € 1,950.000



Machinery

Engines: 2 x 2000hp MTU

Hours: 3150(March 2025)

Engine Model: 16V2000M91

Fuel Type: Diesel

Drives: Shafts V-Drives

Fuel consumption: 600 Lit/hr @ 2100 rpm

Generators: 2 x 27kw Kohler

Hours: 1400 Stbd & 1250 Port(March 2025) // Overhauling 2023

Air Conditioning reverse cycle

Bow Thruster

Desalinators 2 x 180Lit/hr

Trim tabs

Electricity: 380VAC - 220VAC - 24VDC

Toilets electric vacuum

Water heater



Accommodation

She can accommodate up to 12 guests in 5 cabins, all with en-suite facilities.

Master stateroom amidships with queen size bed and en-suite bathroom

(2) VIP cabins forward with double beds and en-suite bathrooms

(2) Guests cabins with twin single beds + an additional Pullman berth in each and en-suite bathrooms

Day WC on main deck

Crew Quarters

Crew cabins: 2

Crew berths: 4

Crew bathrooms: 2

(2) Cabins with two bunks in each with en-suite bathrooms

Crew cabins forward accessed via stairway from wheel house



Entertainment

Satellite TV antenna

TV LCD 40in, DVD, VCR, CD, & Stereo entertainment system in main Saloon

TV sets LCD 26in in all cabins

SAT decoders, in all cabins

DVD, CD/Stereo in all cabins

Domestic Equipment

(4) Refrigerators

Deep freezer

Electric cooker

Electric oven

Microwave oven

(2) Ice Makers (2022)

Dishwasher

Washing machine

New BBQ (2022)

Safety Equipment

Automatic and manual bilge pumps

Automatic fire extinguishing system

Fire & Smoke Control system

Emergency Fire Pump

CCTV monitors with Cameras Aft deck & Engine room



Navigation/Communication Equipment

- (2) Magnetic compasses
- Gyro compass
- (2) GPS Navigators
- Radar
- Autopilot
- Depth Sounder
- Navtex
- SATCOM Tel/Fax
- Internet Access (GSM & GRC FLIT 33 connection)
- WiFi
- (2) VHF
- Inter-Comm
- Laptop and Printer

Navigation/Communication Equipment

- Motor Yacht with flying bridge
- Planning hull design
- GRP hull and superstructure
- All decks are Teak laid
- Color White



Tenders & Water Toys

NOVURANIA Tender 4.50m with YAMAHA 60 HP outboard

Waverunner KAWASAKI 1300CC - 2 seats

Sea Bob f5s

Paddleboard

Seabob

Waverunner

Snorkelling gear

Waterski adult

Towables

Kayak - 1 seat

Towed Buoy for 4 persons

Floating Mat

2 X SUP

2 Tubes

Water Skis

Snorkeling Equipment

Deck Equipment

Electric anchor windlass

Bimini top

Wet bar on flying deck with BBQ and fridge



Refits

2022:

Full painting hull and superstructure

New Teak decks throughout

New Interior curtains and carpets

New linens

New Ceiling fabric on Main Deck in light beige

New leather fabric on all sofas.

Retractable Bimini forward sunbathing area

Update of electronic Systems

2018:

New Carpets throughout the yacht

New Linens

New Kitchen appliances

New fabrics in all outdoor areas

New Wind and sun protection full coverage in main aft deck

New awning system on the flybridge

New speakers at all outdoor areas

New black water tank



Recent Work List

GENERATORS

Extended Manufacturer's Service

Heat Exchangers Replacement

Sea Water Pump Replacement

MAIN ENGINES

Heat Exchangers Cleaning

Fuel Injectors Replacement

Annual Service

ENGINE ROOM

New HVAC Pumps

M/E Exhausters Replacement / New Isolation

Installation of fuel purifier type DELAVAL

New CCTV Cameras

GALLEY

Oven/HOB Replacement

SALOON

Carpet Replacement

Bench extension and new Wine Storage

New leather ceiling

Compartment

Replacement of Dinner Table with a larger one

MAIN DECK

New Cushions 'Fabrics throughout main deck

SUN DECK

New Fabrics and mattresses

New Ice Maker

EXTENDED CRANE SERVICE





























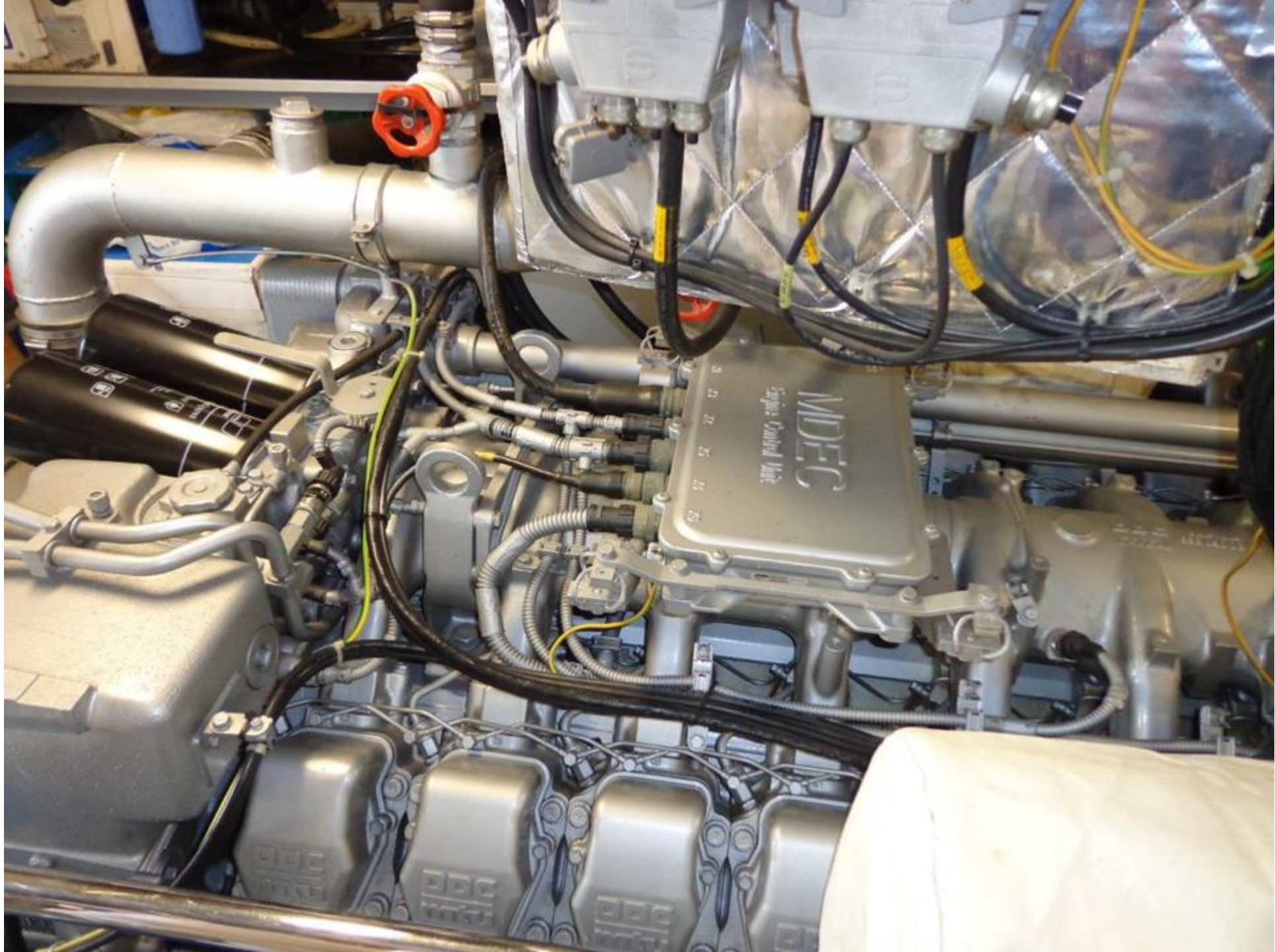




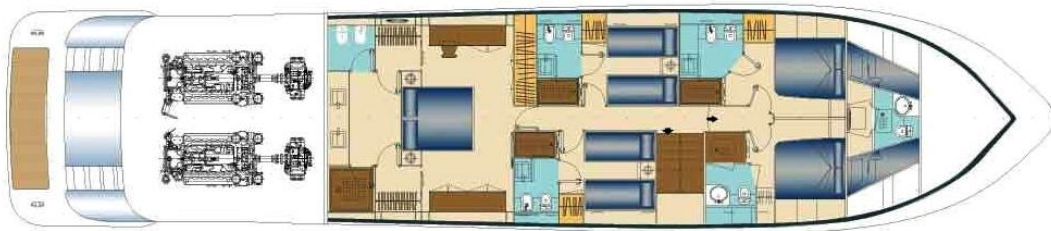
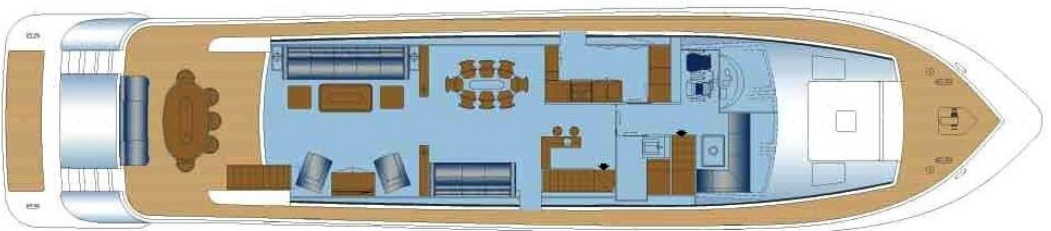












An aerial photograph of a beach. The top half of the image shows a wide expanse of white sand. The bottom half shows the ocean with clear, turquoise water and white foam from waves breaking on the shore. A semi-transparent white rectangular box is centered over the image, containing text.

Disclaimer

The Company offers the details of this vessel in good faith but cannot guarantee or warrant the accuracy of this information nor warrant the condition of the vessel. A buyer should instruct his agents, or his surveyors, to investigate such details as the buyer desires validated. This vessel is offered subject to prior sale, price change, or withdrawal without notice.